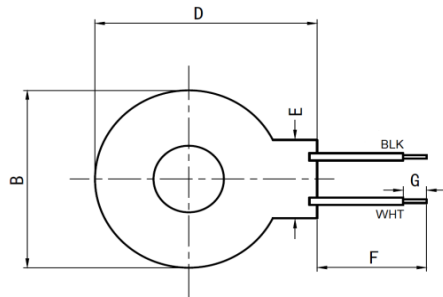
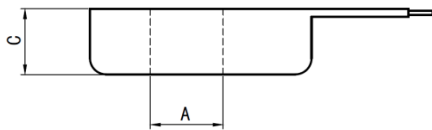


# KD24Series Current Transducer

## Mechanical



Front View



Side View

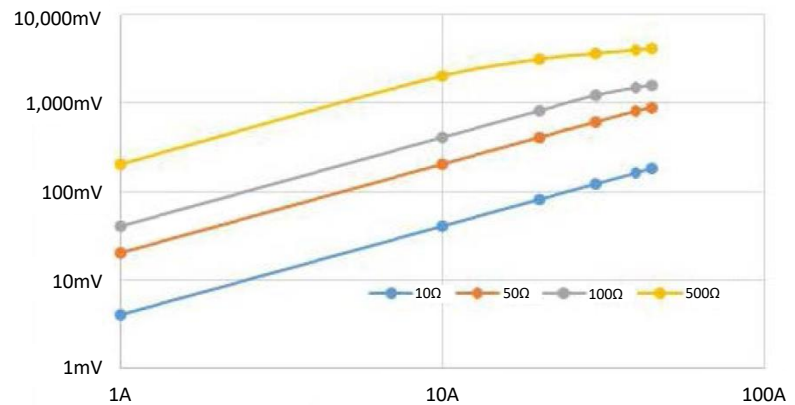
### Dimension (mm) Tolerance (mm)

Dimension (mm)	Tolerance (mm)
A	9.0 ± 0.3
B	22.5 maximum
C	9.0 maximum
D	25.0 ± 0.3
E	6.5 ± 0.3
F	125.0 ± 5.0
G	5.0 ± 1.0



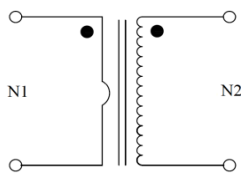
RoHS Compliant

Kormag P/N: KD24-0010-00



## Schematic

Item	Pin(S)	Pin(F)
N1 Customer cable to be measured		
N2 Wired Connections 24awg (UL1007)	BLK	WHT



### Electrical Specification @ 25°C

N1 Current:	10A Continuous, 45A Maximum
N2 Current:	4mA maximum, Load Resistance = 10Ω
Accuracy:	0.2 Class
Hipot:	3.0kVac 50Hz, 60 seconds, 1mA

- Winding Start

## Notes

- 1 Product is encapsulated with epoxy glue
- 2 Insulation: Class B 130°C
- 3 Storage temperature: -20°C to 85°C
- 4 Operating temperature: -25°C to 125°C
- 5 Electrical and mechanical specifications: 100% test

Rev	Date	Approved	Information
00	10.09.2020	JP	First design

The copyright holder Kormag Ltd does not allow this drawing or part thereof to be copied without written consent.